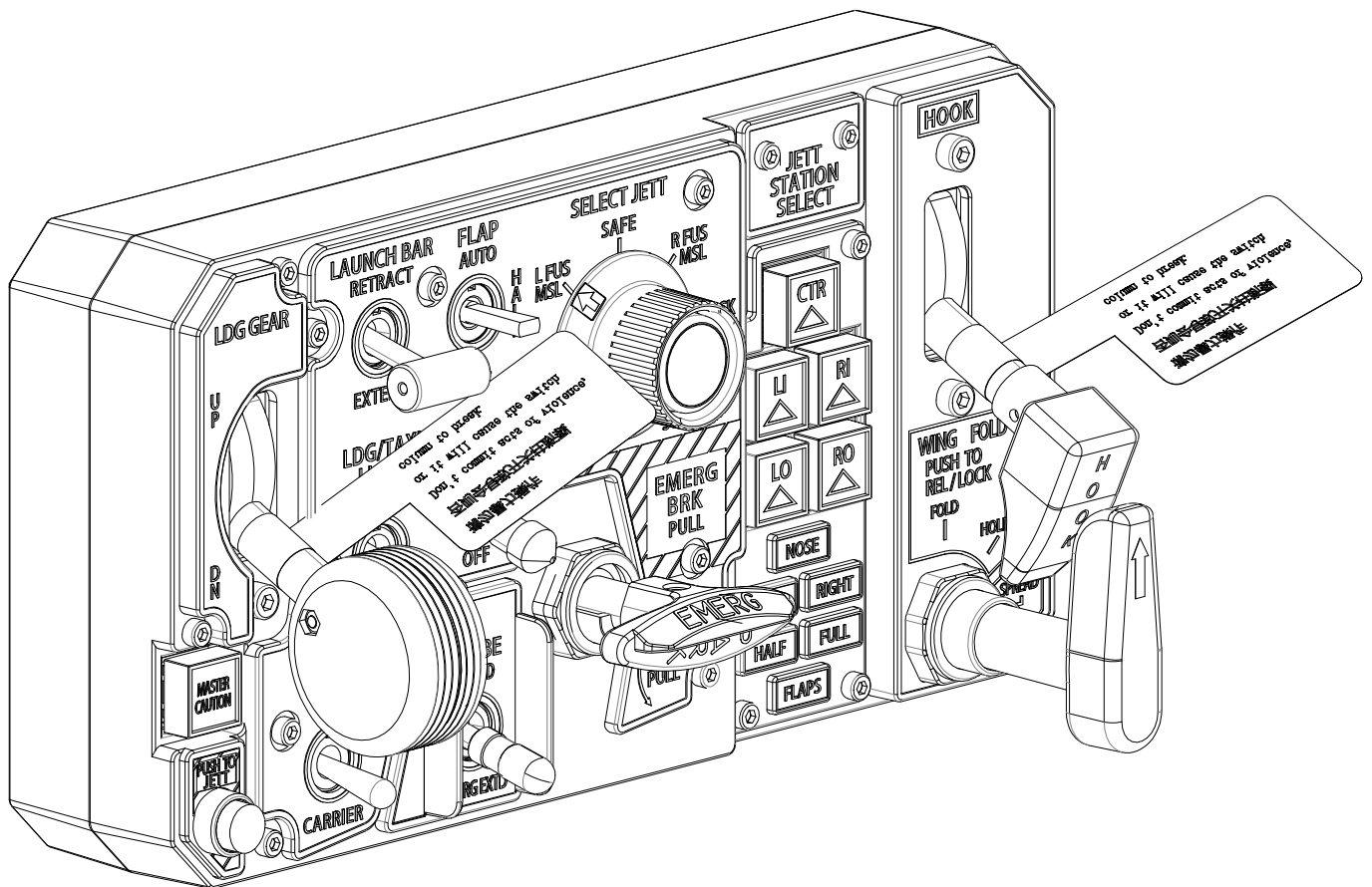


PT02

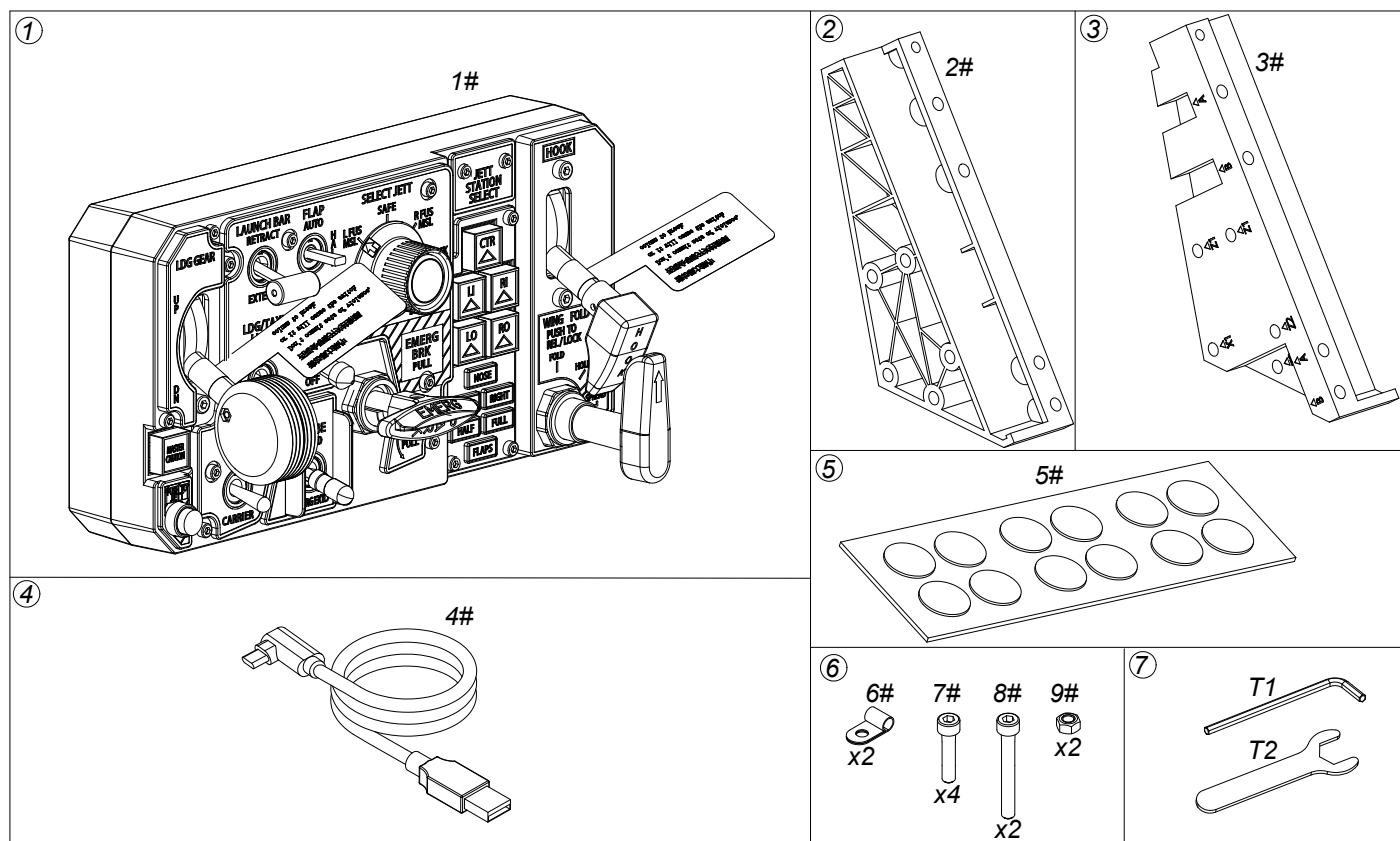
User Manual V1.1 2023.10



Catalogue:

Contents in the box	1
1. Parameters	2
1.1 Performance Parameters.	2
1.2 Applicable Models	4
1.3 Dimensions	4
1.4 Installation Dimensions	5
2. Function	5
2.1 Mechanical/Special Functions	6
2.2 Buttons	6
2.3 Adjustment Methods	7
3. Assembly of Components	8
4. Installation Methods	8
4.1 Bracket Mounting	8
4.2 Gaming Seat Mounting	14
4.3 Cockpit Mounting	14
4.4 Cascading	14

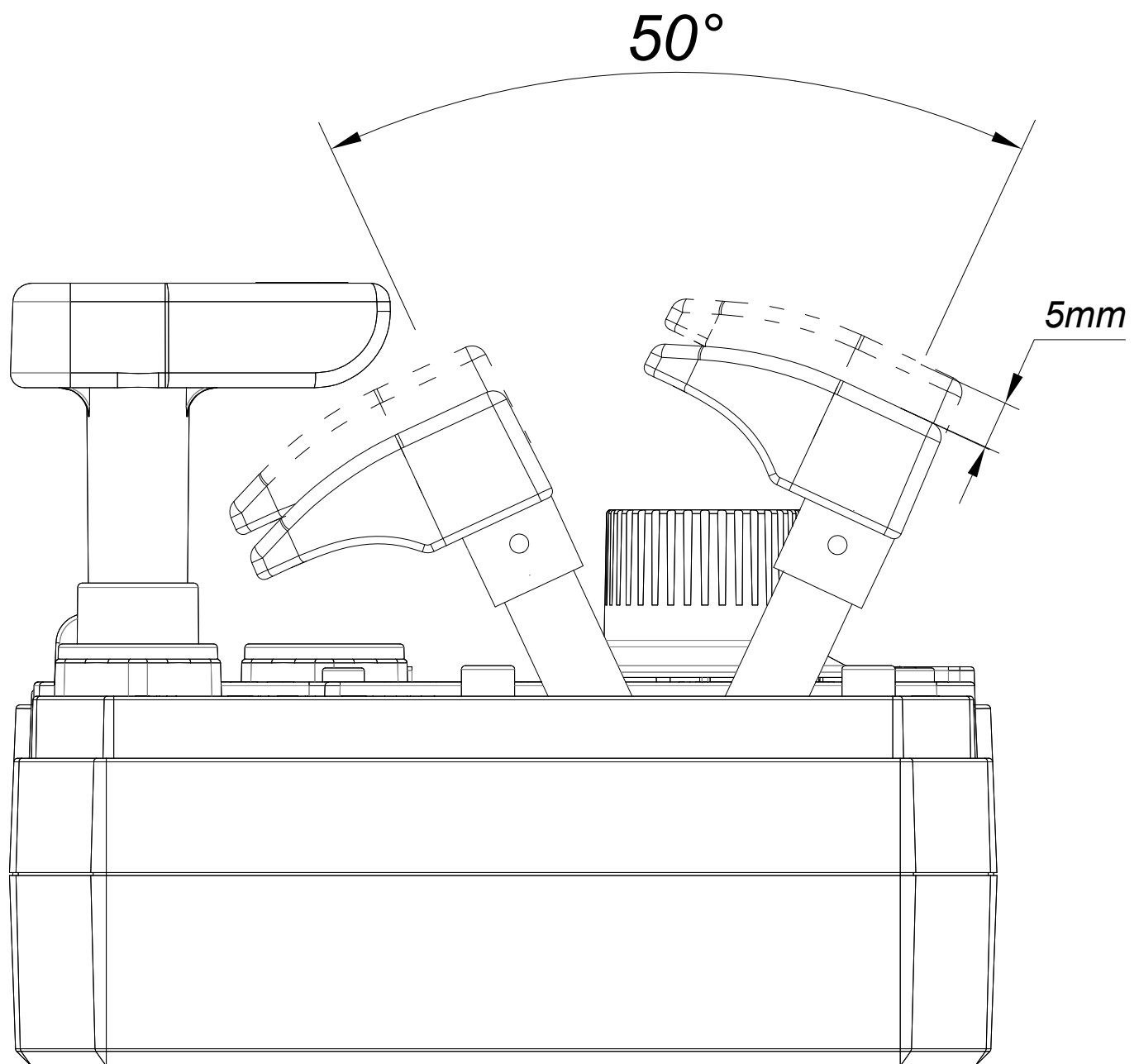
Contents in the box



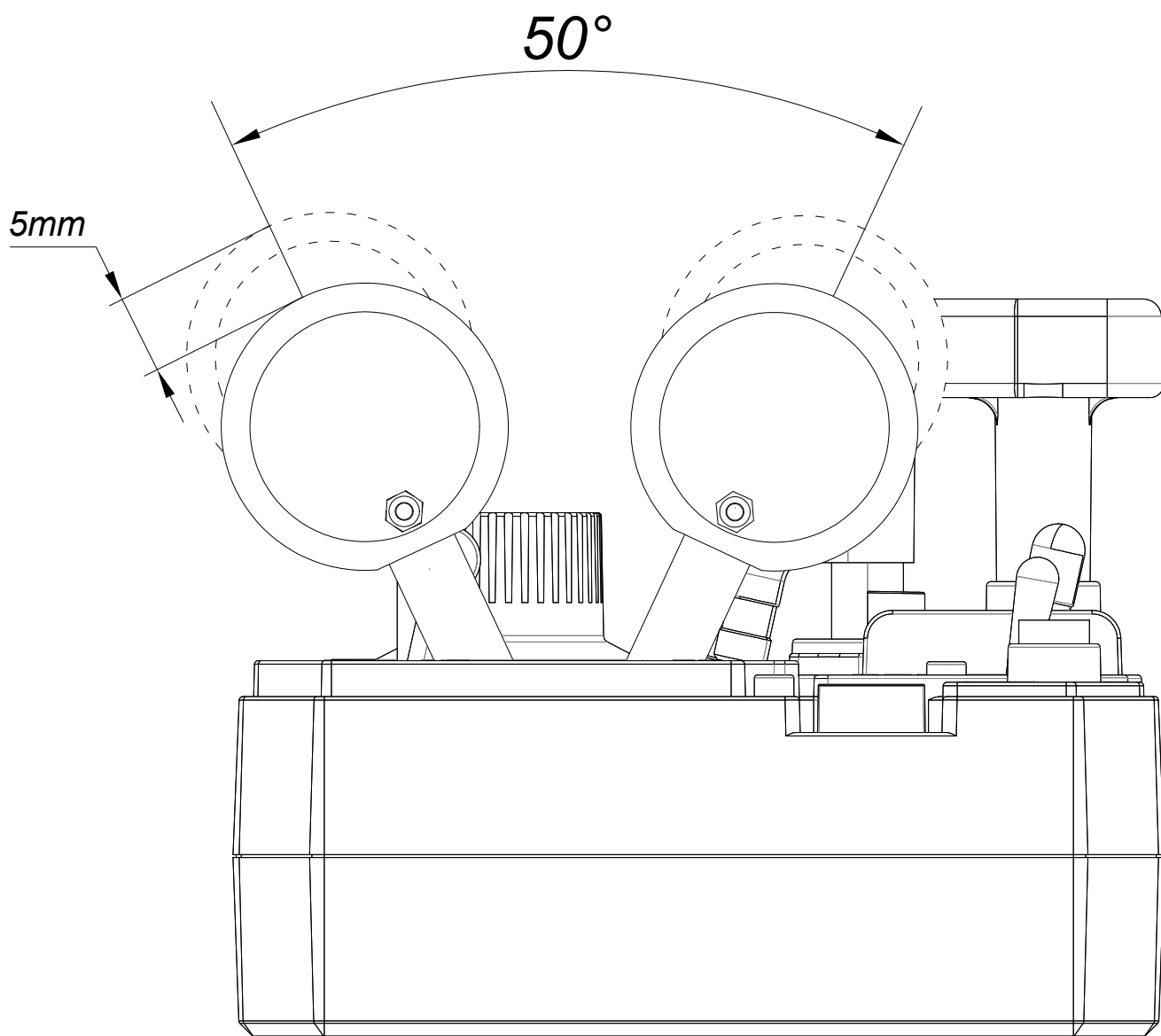
①	PT02 (1#)	1
②	Mounting Bracket - Left (2#)	1
③	Mounting Bracket - Right (3#)	1
④	Data Cable (4#)	1
⑤	Nanometer Double Sided Adhesive Dots (5#)	1
⑥	Accessories Kit (6#~9#)	1
⑦	Tools Kit (T1、T2)	1

1. Parameters

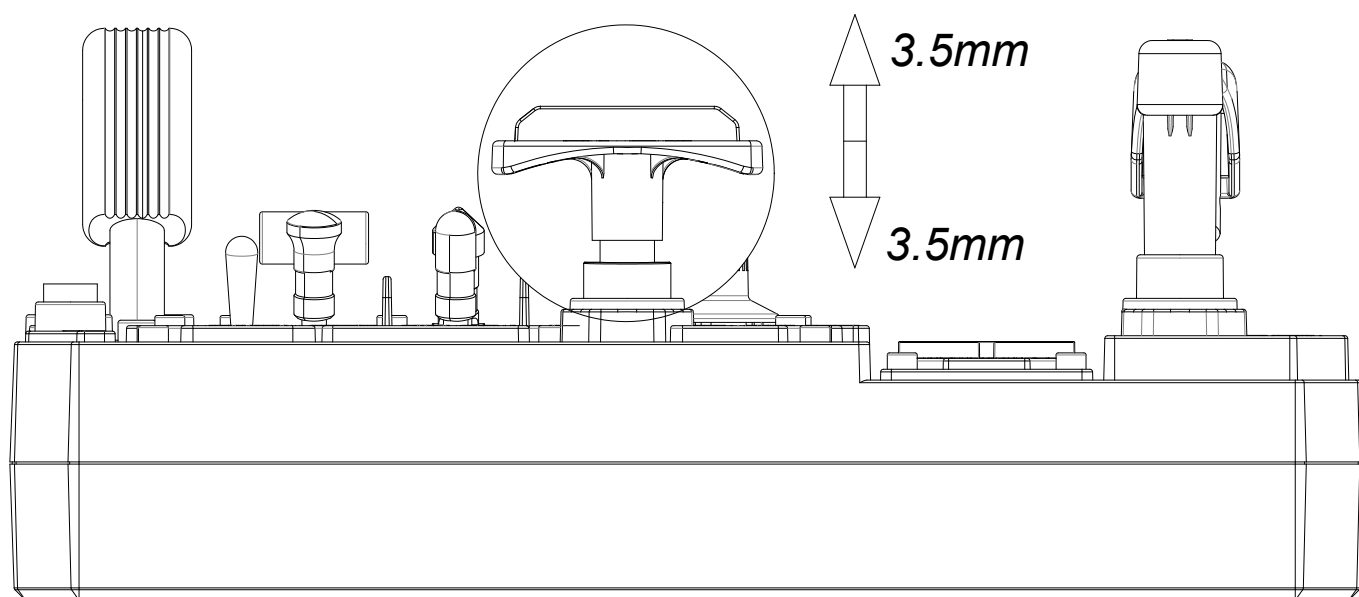
1.1. Performance Parameters

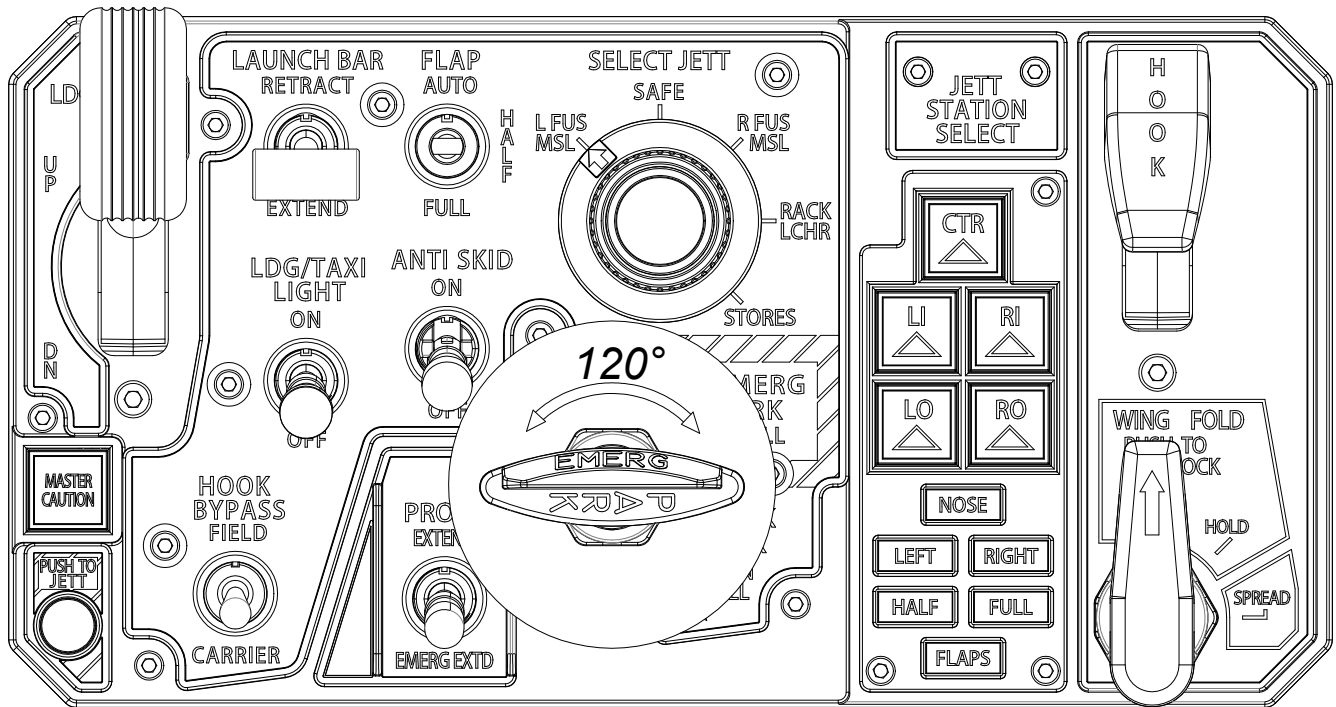


The handle has a total travel of 50 degrees and features a midpoint scale. At both ends of the travel, the handle is in a locked state and needs to be pulled up during operation.



The handle has a total travel of 50 degrees and features a midpoint scale. At both ends of the travel, the handle is in a locked state and needs to be pulled up during operation.





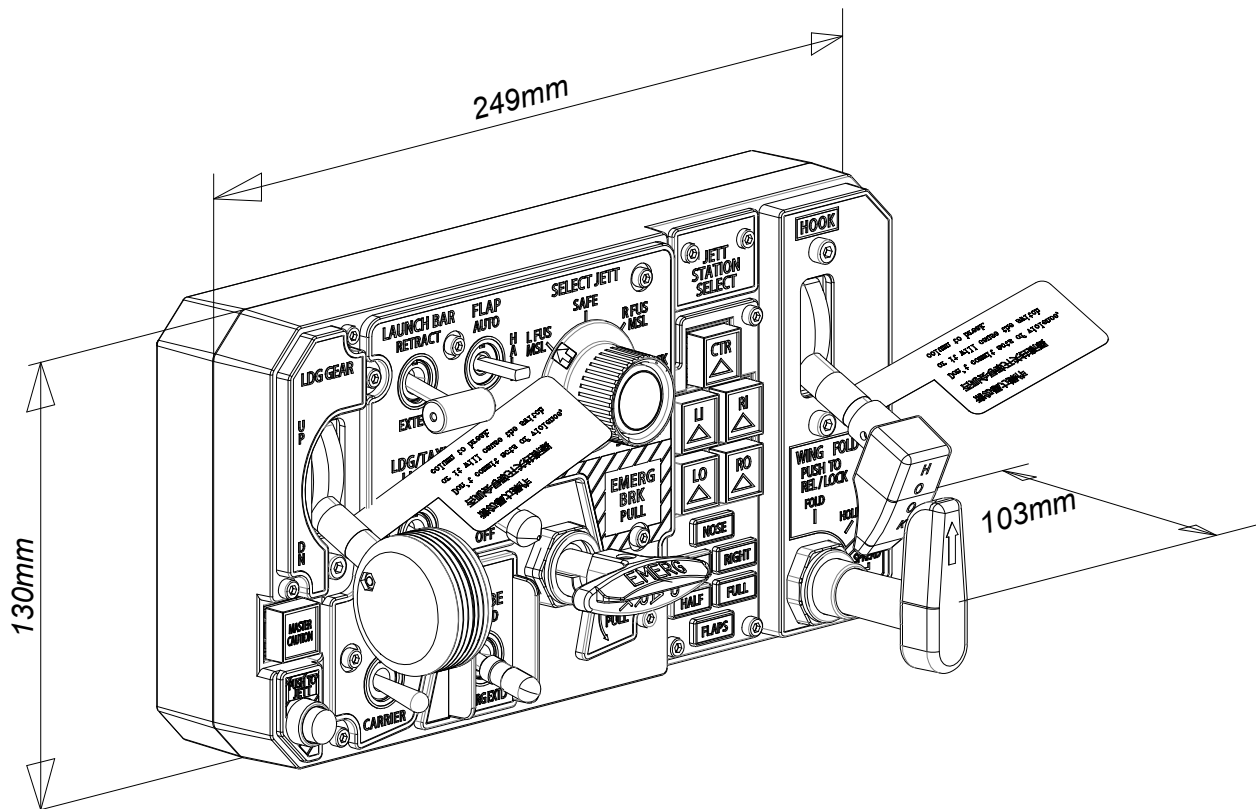
*This switch can only be operated individually for either push-pull or twist. It is not possible to perform both actions simultaneously.

*The rotation angle is $\pm 60^\circ$, and the rotational torque is less than 0.5kgf.cm.

1.2. Applicable Models

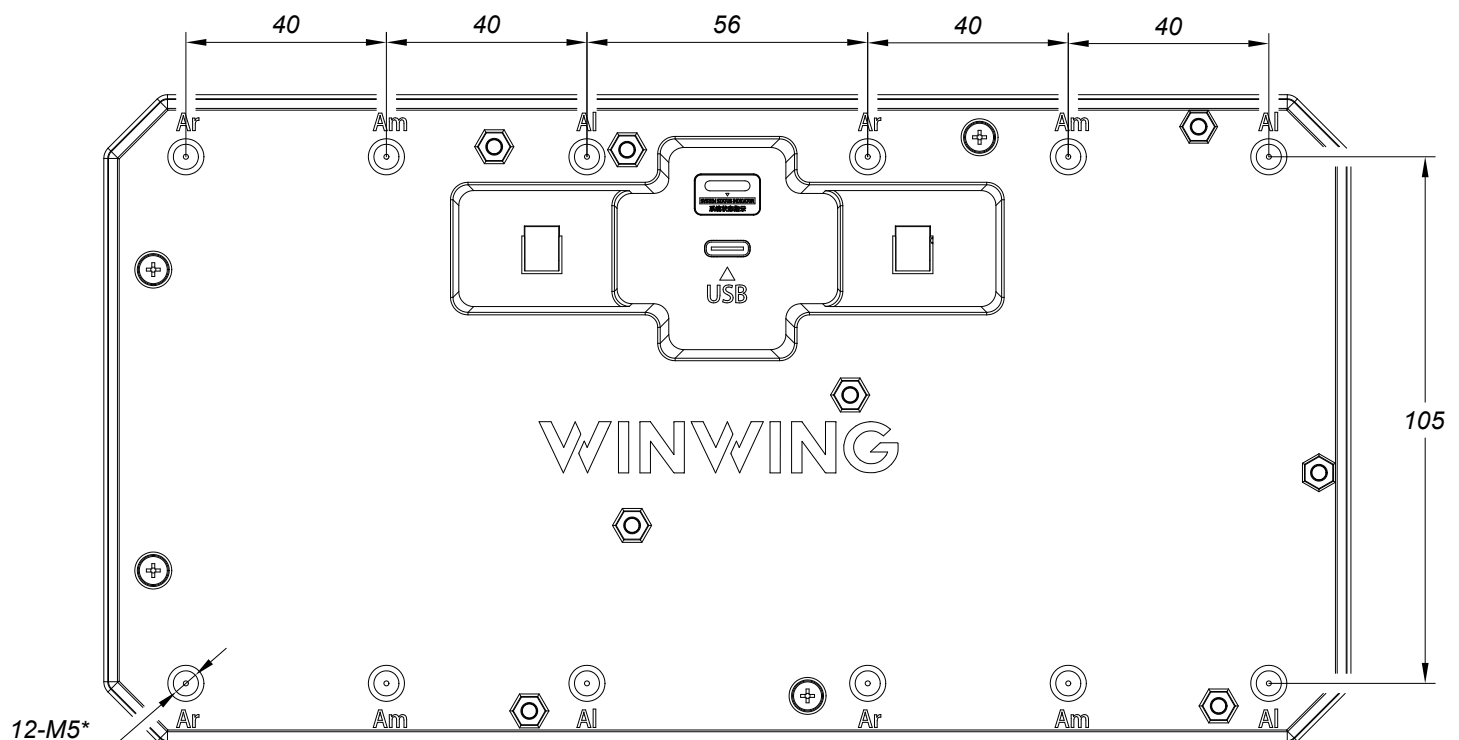
/

1.3. Dimensions



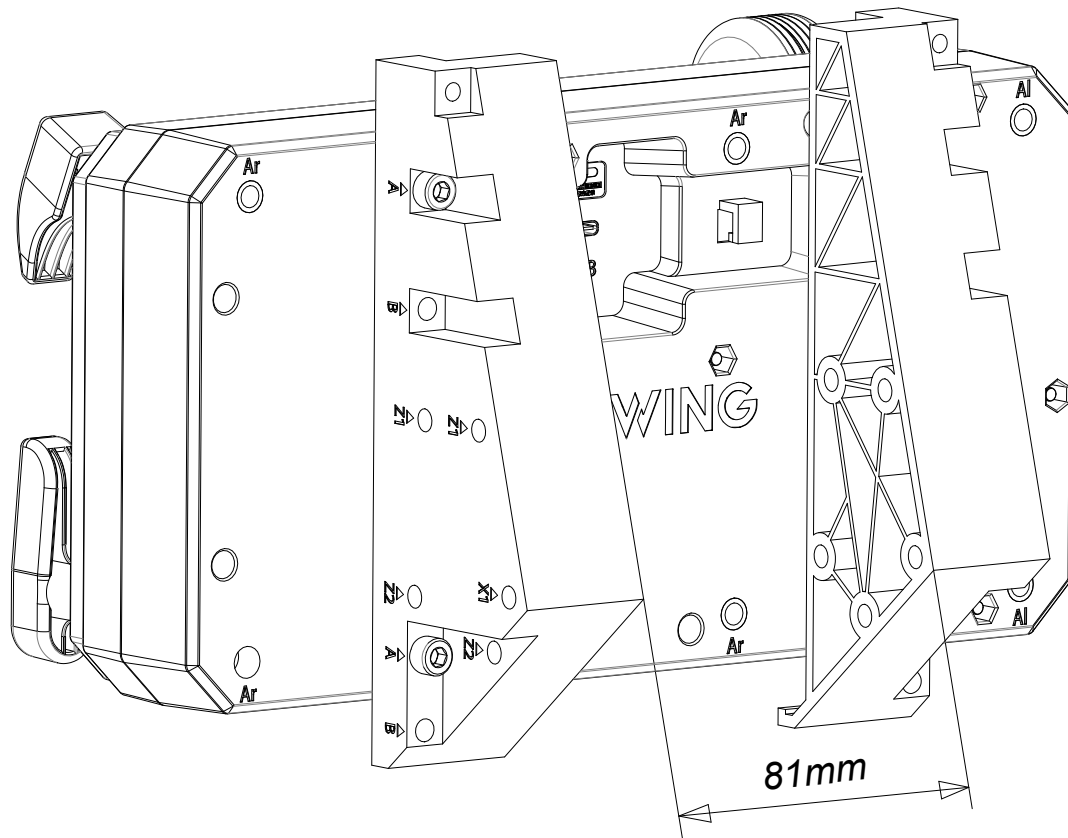
Length\Width\Height: 249mm*130mm*103mm; Mass: 1.9Kg = 4.19Lb

1.4. Installation Dimensions



*12-M5 Maximum depth: 5mm.

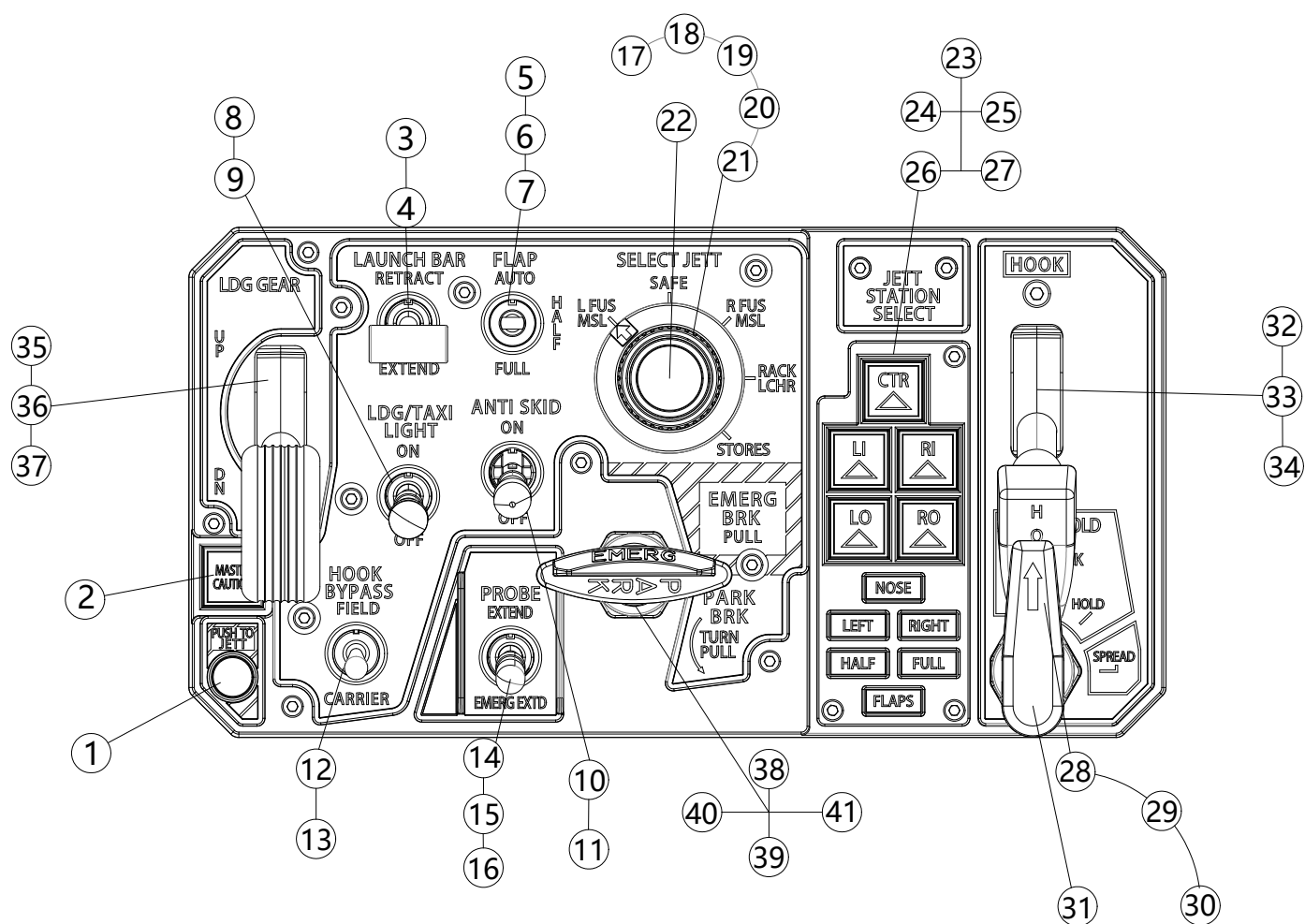
*Unit in millimeter: mm

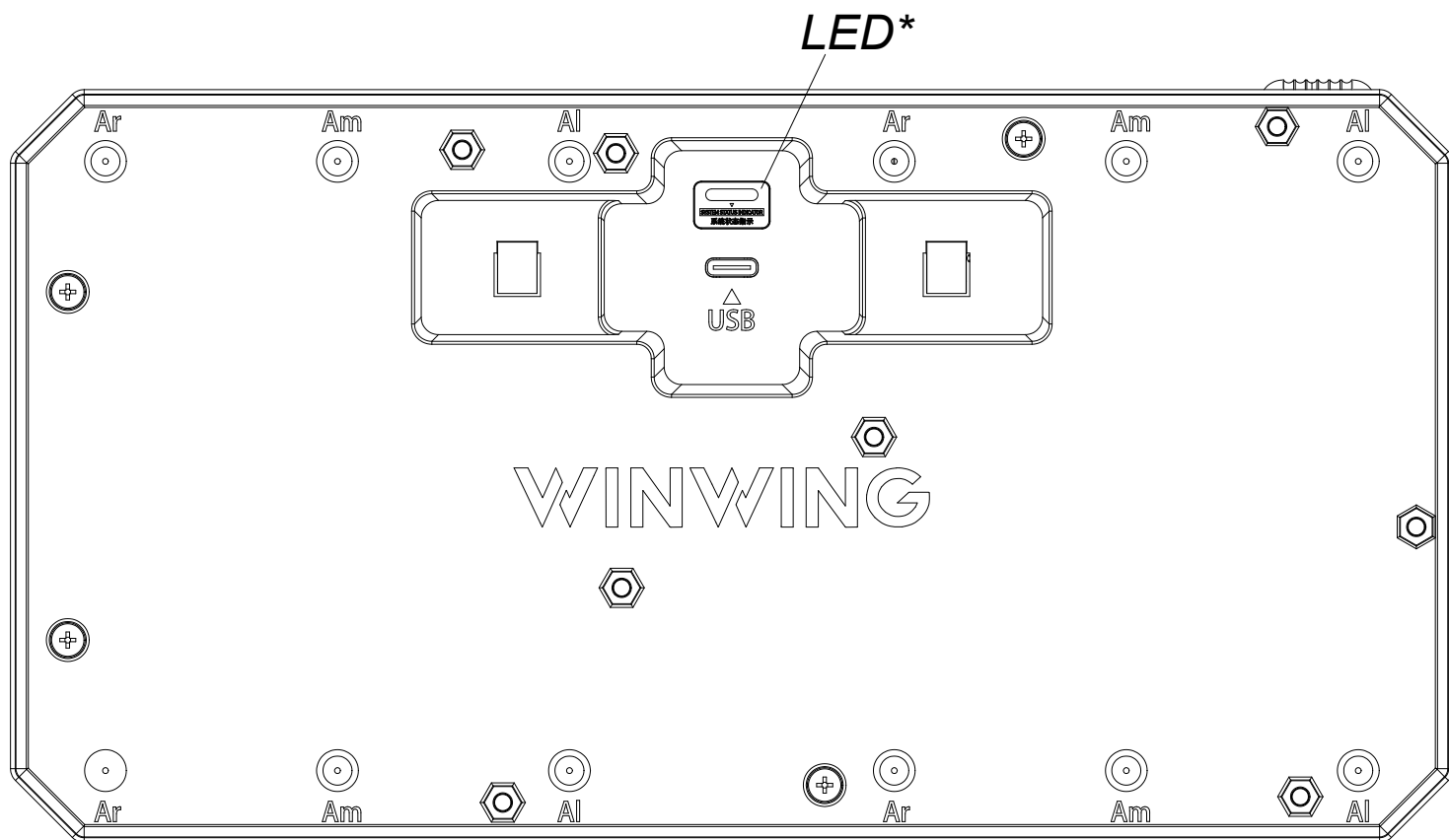


2. Function

2.1. Mechanical/Special Functions

2. 2. Buttons





*LED Status Display:

Steady slow flashing in green (1s interval) – B00T mode.

Slow flashing in green (1s interval) for 5 times, then steady ON – Operational mode.

Slow flashing in green (1s interval) for 5 times, then OFF – Power supply only mode.

2.3. Adjustment Methods

/

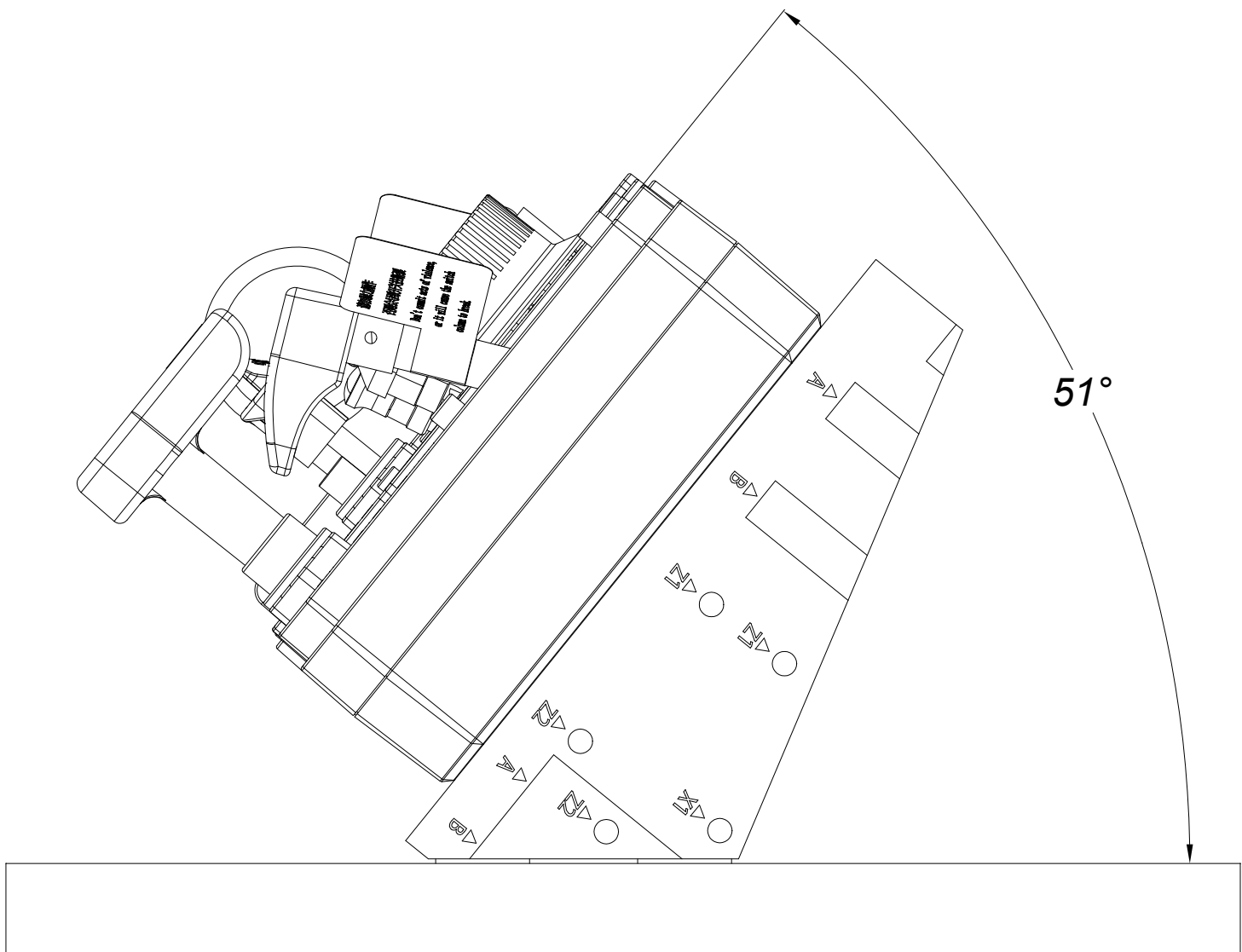
3. Assembly of Components

/

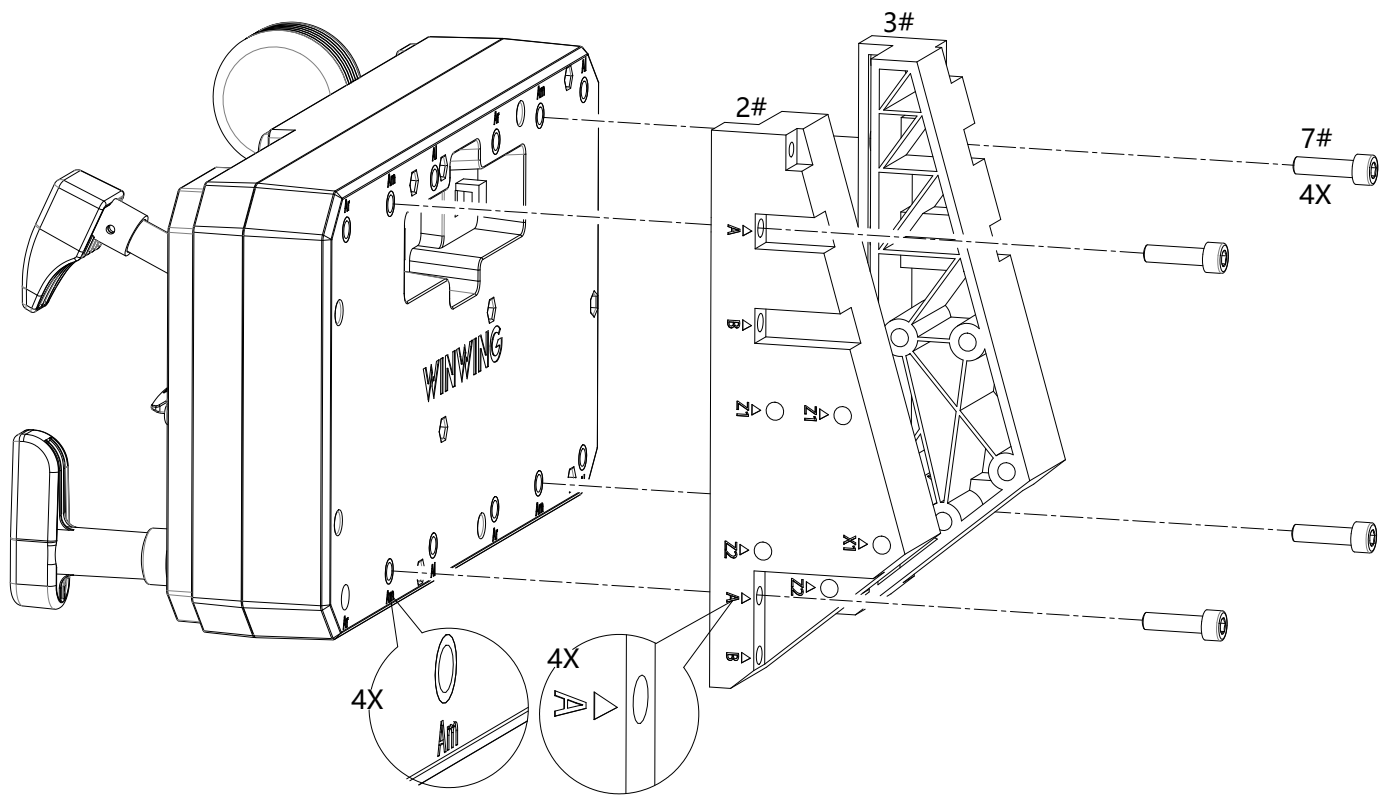
4. Installation Methods

4.1. Bracket Mounting

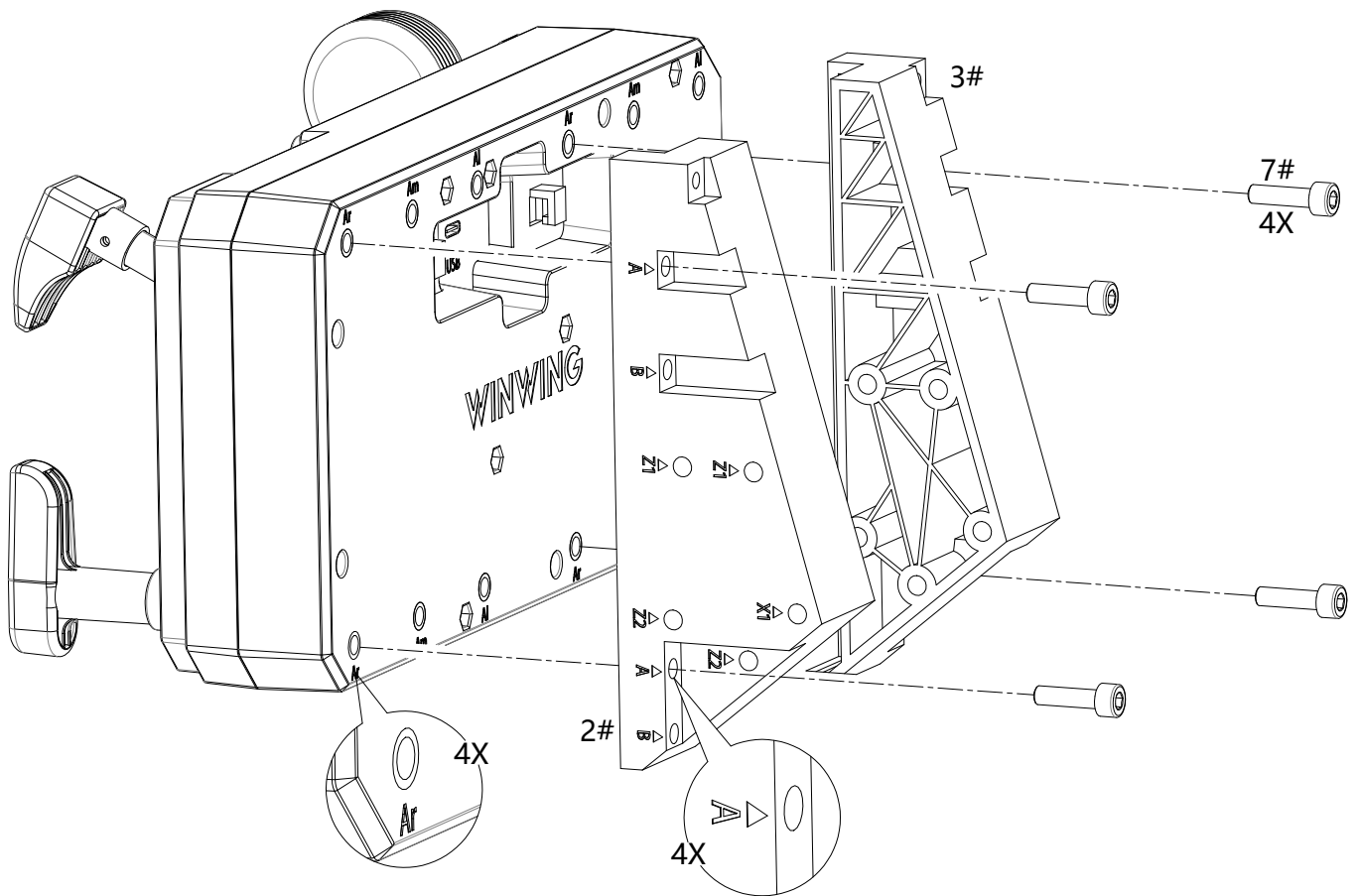
1. Installing at an angle of 51 degrees from the desktop



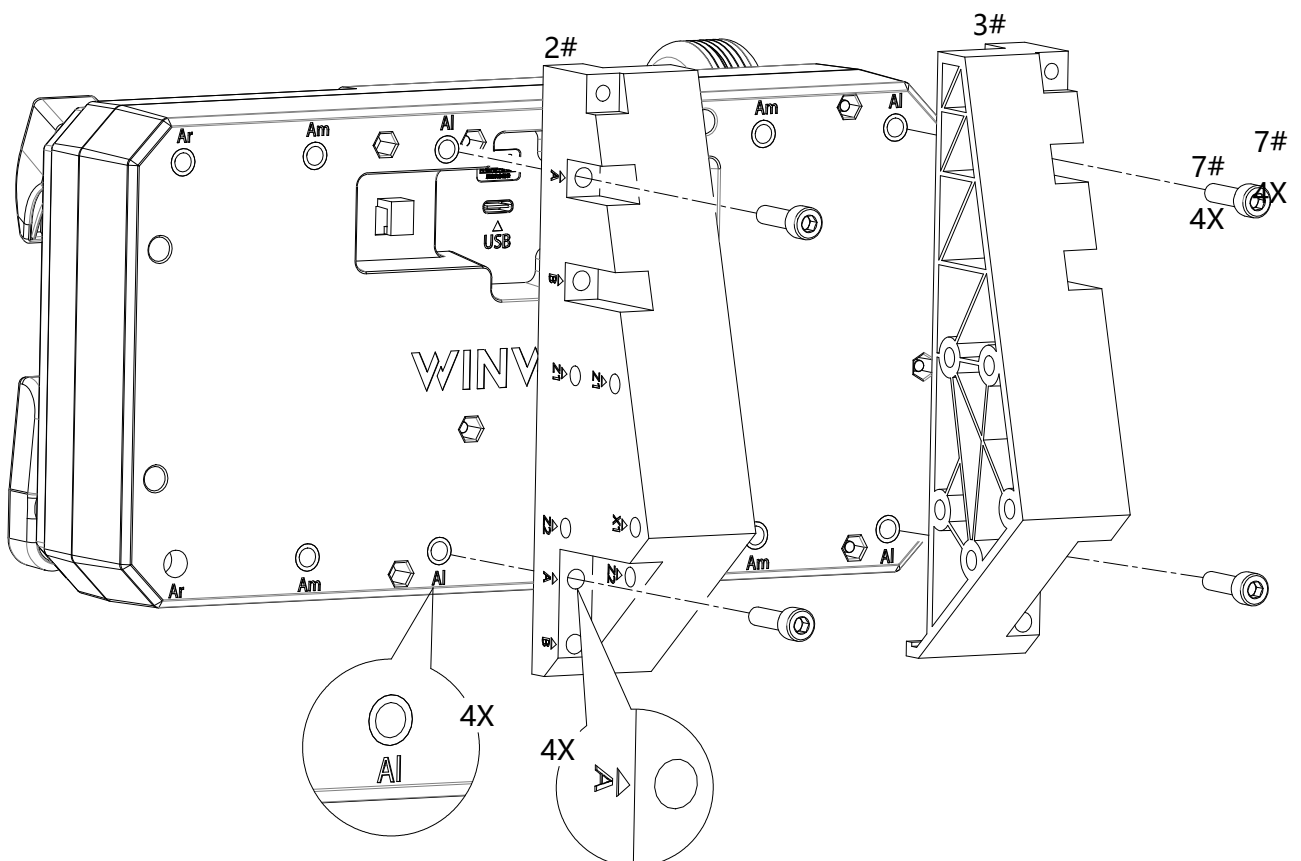
Am Hole Mounting

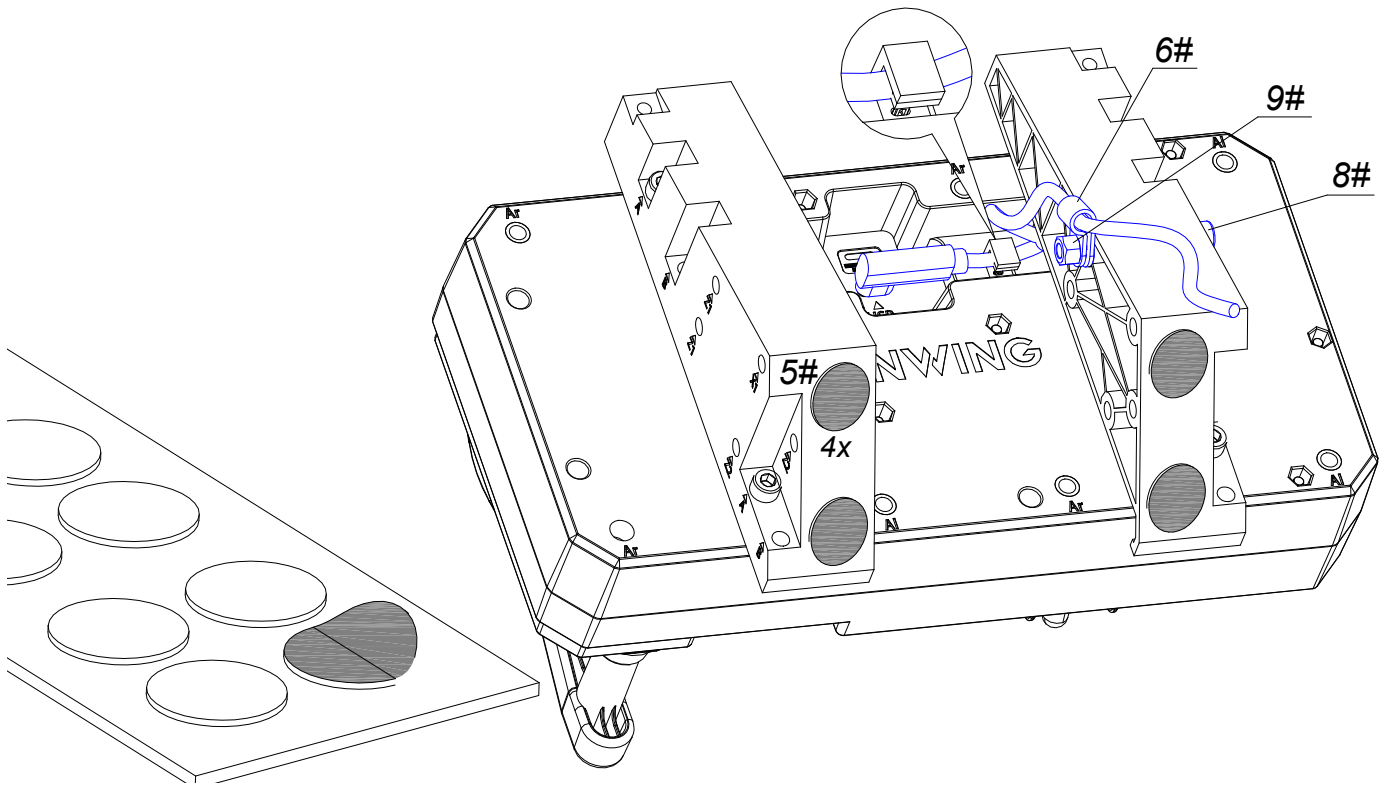


Ar Hole Mounting



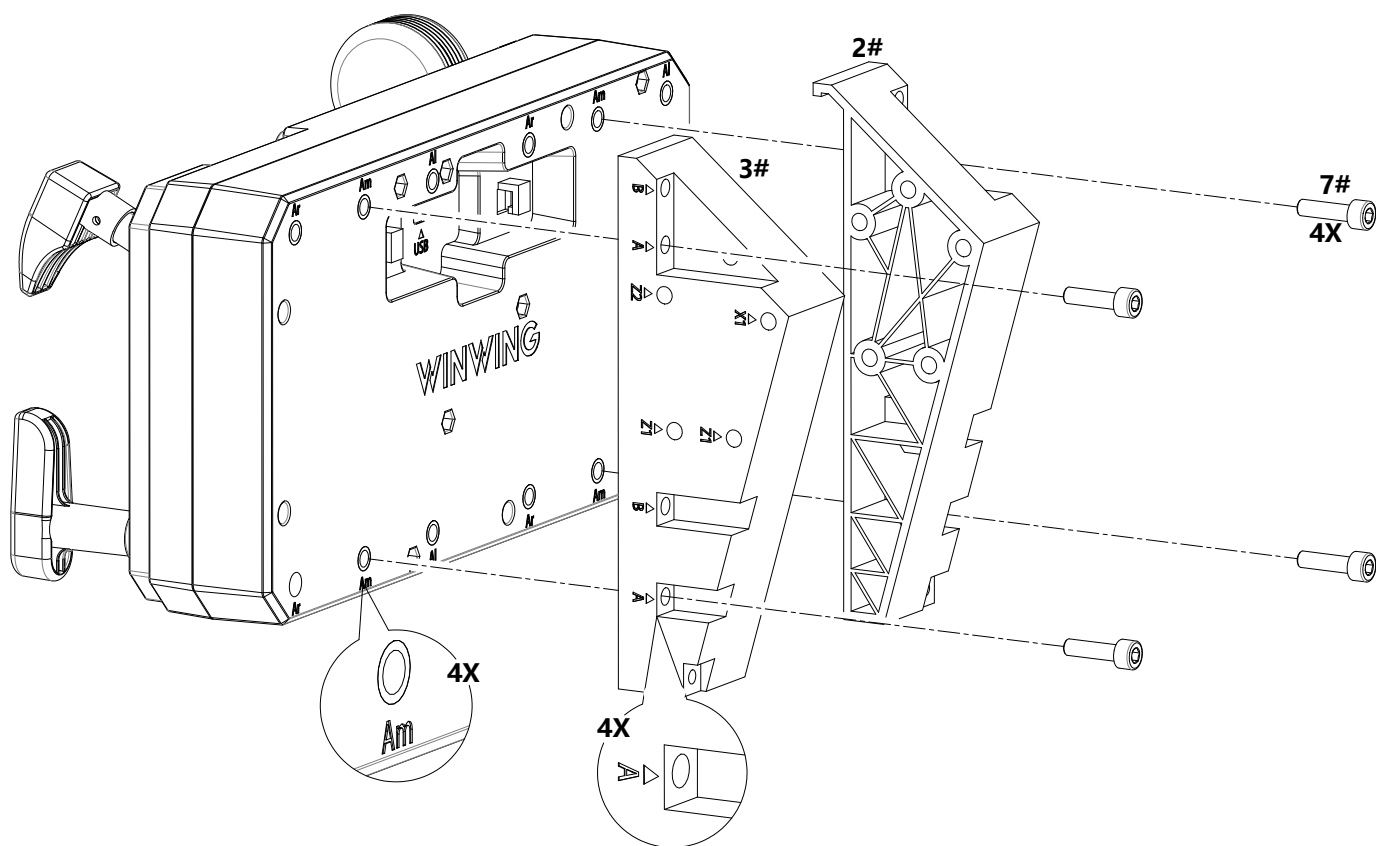
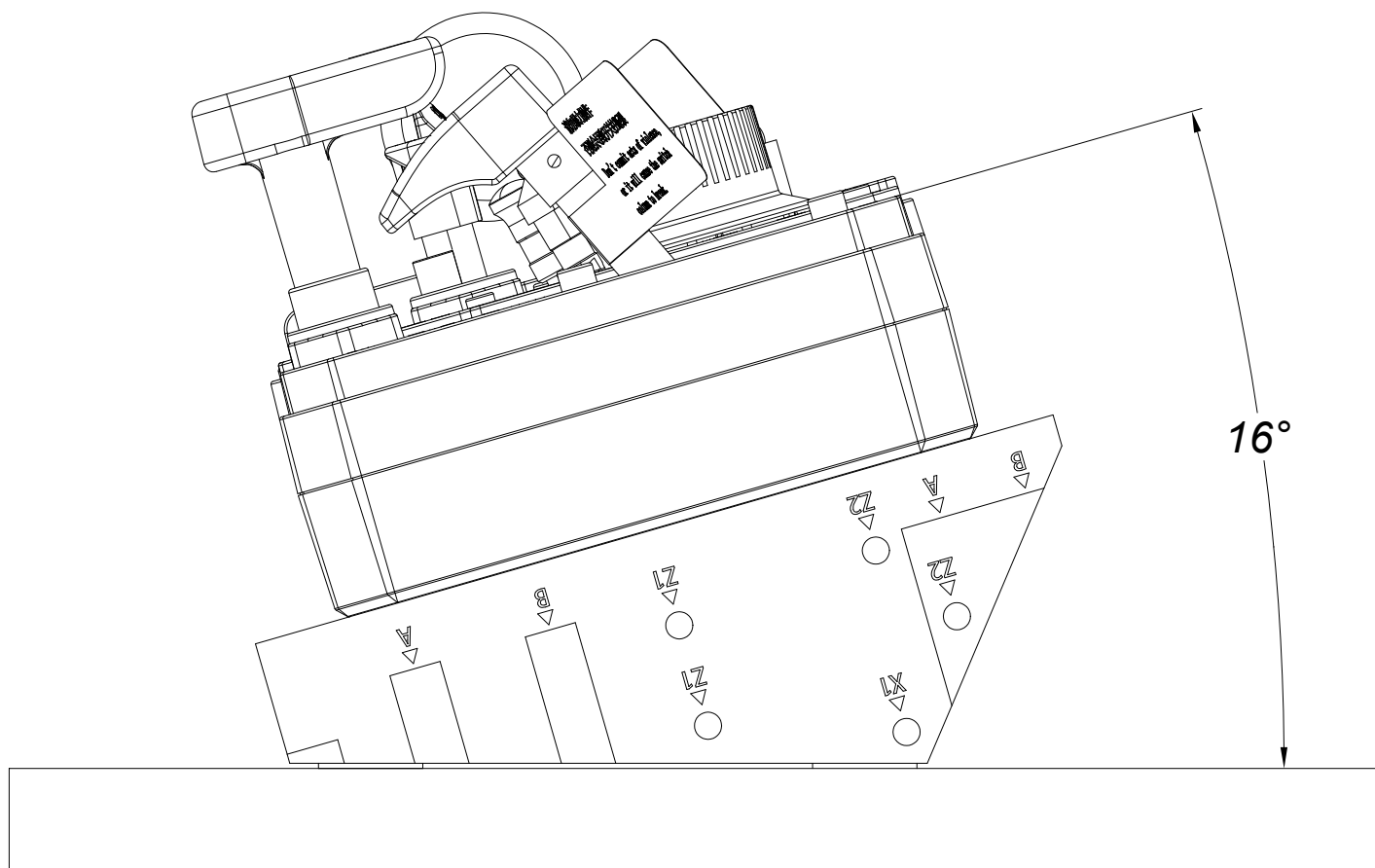
AI Hole Mounting



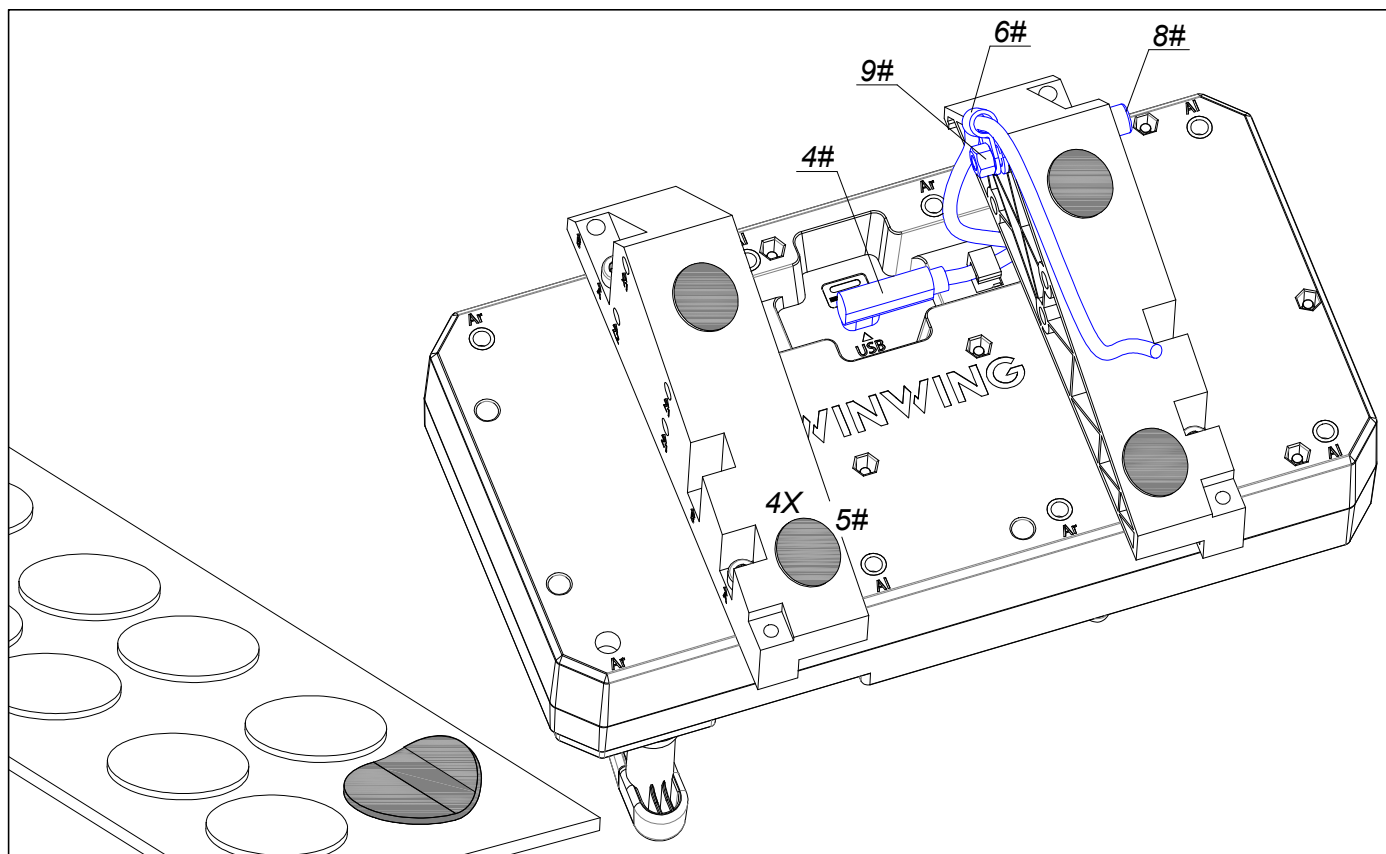


- * Tighten the screw until there is no shaking; excessive tightening may cause damage.
- * Unused holes on the bracket can be used for installing cable clips.
- * Specification for 7#: M5*18; Specification for 8#: M5*40.

2. Installing at an angle of 16 degrees from the desktop



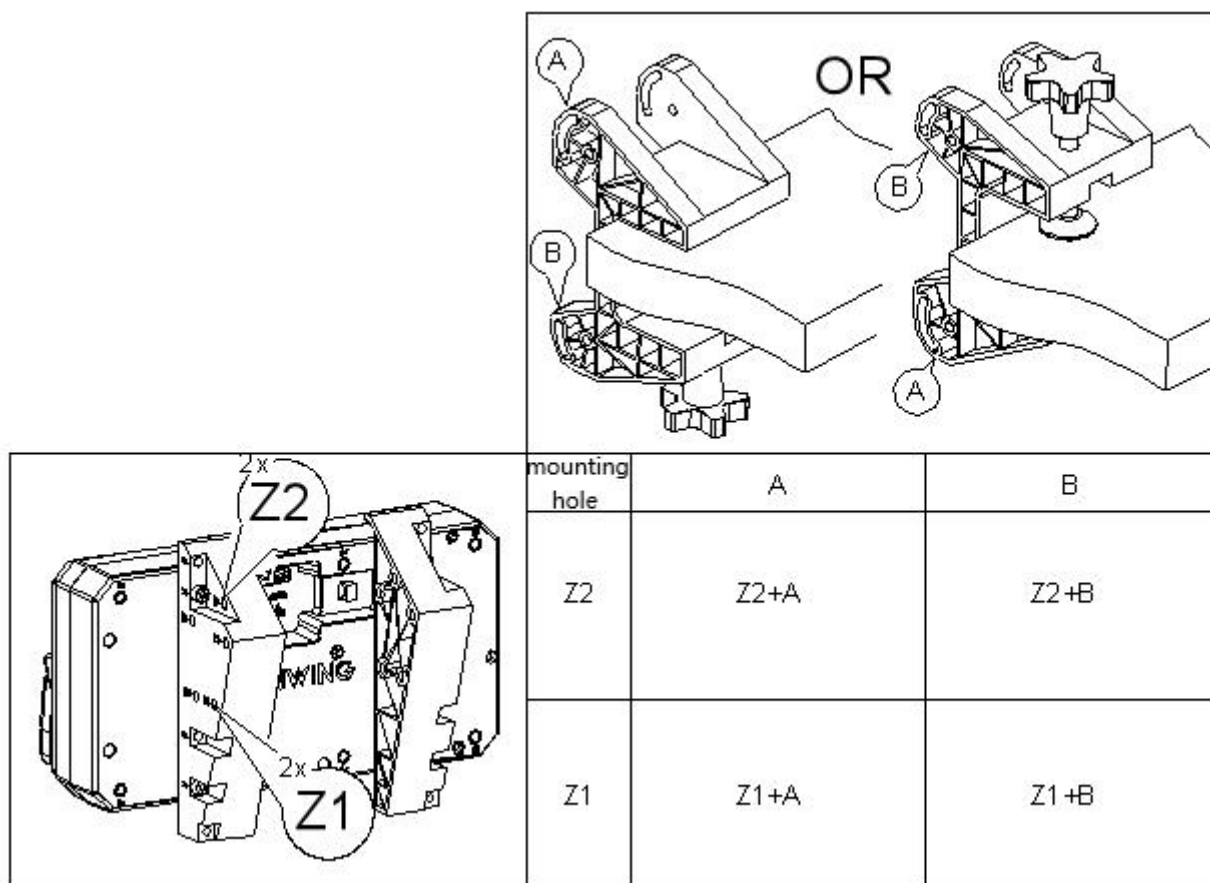
*Only demonstrate the installation method using the Am hole, the rest are identical.



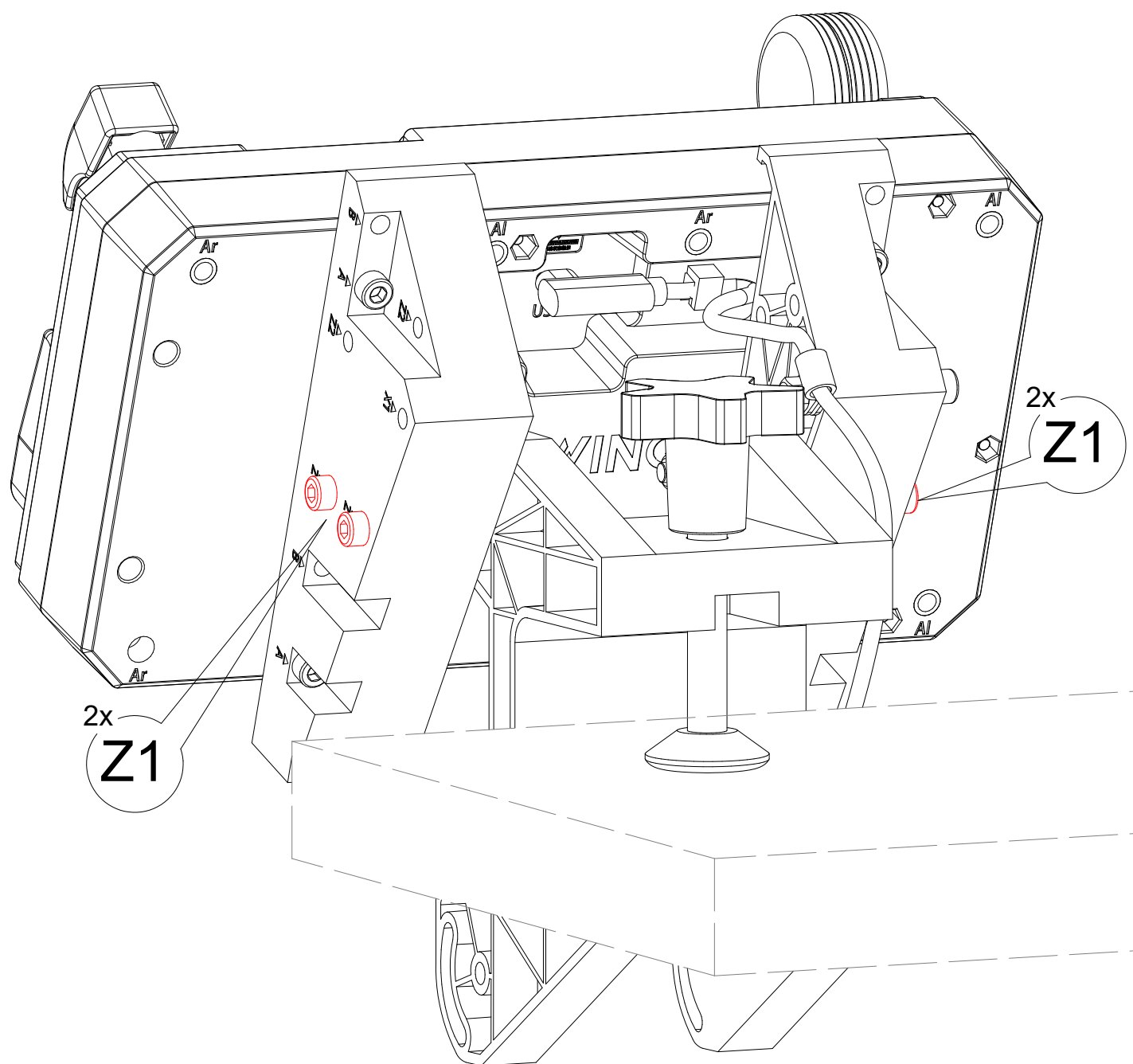
3. Installing with Clamp Bracket

*Clamp brackets and related accessories need to be purchased separately.

*Offering installation methods for the following combinations:



This manual demonstrates one installation method (Z1+B), and the rest are identical.



4.2. Gaming Seat Mounting

/

4.3. Cockpit Mounting

/

4.4. Cascading

/

Content may be updated without prior notice.

成都翼胜科技有限责任公司

Chengdu WINWING Tech Co., LTD

WWW.WINWING.CN

INFO@WINWING.CN

成都市郫都区现代工业港长生桥路 1111 号 19 栋

High-tech International Enterprise Zone No.19 Building, Changshengqiao Road

1111#, Pidu District, Chengdu, China 610000